

Faculty Senate

Updates from the Chancellor

September 13, 2006

Vice Chancellor Search

- Grace Miller to chair Search Committee
- National Search for best candidate
- During Fall:
 - ▶ Committee formed
 - ▶ Advertisements out
- During Spring:
 - ▶ Application deadline
 - ▶ Interviews and selection process



vc search

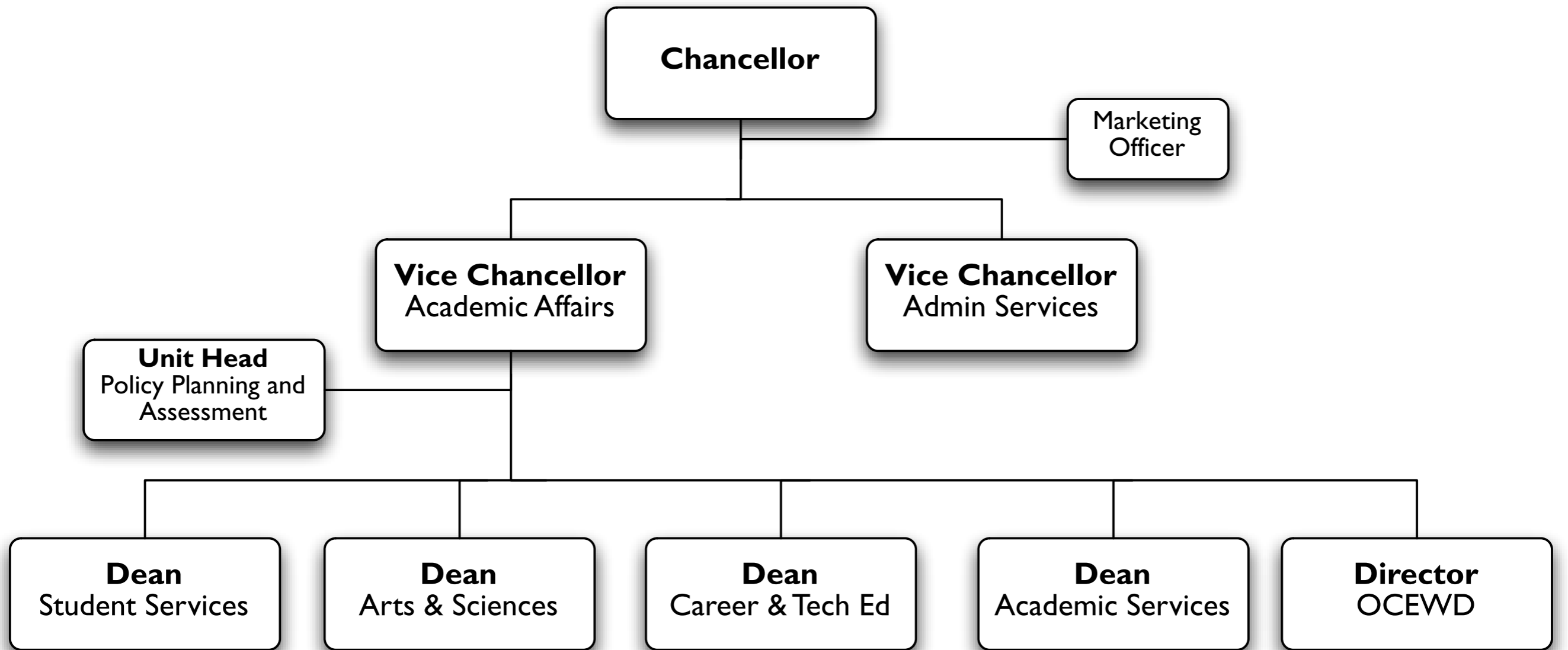


reorganization



phase 2 diagram

College Administrative Reorganization



vc search



reorganization



phase 2 diagram

Phase Two

STANDING COMMITTEES

- Space Utilization
- Staffing
- Info Technology
- Equipment
- External Issues

INSTRUCTIONAL PLANNING

Personnel	Eqpmt	Personnel	Eqpmt	Personnel	Eqpmt	Personnel	Eqpmt
1. xxxxx	1. xxx	1. xxxxx	1. xxx	1. xxxxx	1. xxx	1. xxxxx	1. xxx
2. xxx	2. xxxxx	2. xxx	2. xxxxx	2. xxx	2. xxxxx	2. xxx	2. xxxxx
3. xxxxx	3. xxxxx	3. xxxxx	3. xxxxx	3. xxxxx	3. xxxxx	3. xxxxx	3. xxxxx
4. xxxxx	4. xxxxx	4. xxxxx	4. xxxxx	4. xxxxx	4. xxxxx	4. xxxxx	4. xxxxx
	5. xxx		5. xxx		5. xxx		5. xxx

INSTRUCTIONAL PLAN

Personnel	Eqpmt
1. xxxxx	1. xxx
2. xxx	2. xxxxx
3. xxxxx	3. xxxxx
4. xxxxx	4. xxxxx
	5. xxx

STUDENT SERVICES AREAS

Personnel	Eqpmt	Personnel	Eqpmt	Personnel	Eqpmt	Personnel	Eqpmt
1. xxxxx	1. xxx	1. xxxxx	1. xxx	1. xxxxx	1. xxx	1. xxxxx	1. xxx
2. xxx	2. xxxxx	2. xxx	2. xxxxx	2. xxx	2. xxxxx	2. xxx	2. xxxxx
3. xxxxx	3. xxxxx	3. xxxxx	3. xxxxx	3. xxxxx	3. xxxxx	3. xxxxx	3. xxxxx
4. xxxxx	4. xxxxx	4. xxxxx	4. xxxxx	4. xxxxx	4. xxxxx	4. xxxxx	4. xxxxx
	5. xxx		5. xxx		5. xxx		5. xxx

STUDENT SRV PLAN

Personnel	Eqpmt
1. xxxxx	1. xxx
2. xxx	2. xxxxx
3. xxxxx	3. xxxxx
4. xxxxx	4. xxxxx
	5. xxx

ACADEMIC SUPPORT AREAS

Personnel	Eqpmt	Personnel	Eqpmt	Personnel	Eqpmt	Personnel	Eqpmt
1. xxxxx	1. xxx	1. xxxxx	1. xxx	1. xxxxx	1. xxx	1. xxxxx	1. xxx
2. xxx	2. xxxxx	2. xxx	2. xxxxx	2. xxx	2. xxxxx	2. xxx	2. xxxxx
3. xxxxx	3. xxxxx	3. xxxxx	3. xxxxx	3. xxxxx	3. xxxxx	3. xxxxx	3. xxxxx
4. xxxxx	4. xxxxx	4. xxxxx	4. xxxxx	4. xxxxx	4. xxxxx	4. xxxxx	4. xxxxx
	5. xxx		5. xxx		5. xxx		5. xxx

ACADEMIC SUPPORT PLAN

Personnel	Eqpmt
1. xxxxx	1. xxx
2. xxx	2. xxxxx
3. xxxxx	3. xxxxx
4. xxxxx	4. xxxxx
	5. xxx

INSTITUTIONAL SUPPORT AREAS

Personnel	Eqpmt	Personnel	Eqpmt	Personnel	Eqpmt	Personnel	Eqpmt
1. xxxxx	1. xxx	1. xxxxx	1. xxx	1. xxxxx	1. xxx	1. xxxxx	1. xxx
2. xxx	2. xxxxx	2. xxx	2. xxxxx	2. xxx	2. xxxxx	2. xxx	2. xxxxx
3. xxxxx	3. xxxxx	3. xxxxx	3. xxxxx	3. xxxxx	3. xxxxx	3. xxxxx	3. xxxxx
4. xxxxx	4. xxxxx	4. xxxxx	4. xxxxx	4. xxxxx	4. xxxxx	4. xxxxx	4. xxxxx
	5. xxx		5. xxx		5. xxx		5. xxx

INST. SUPPORT PLAN

Personnel	Eqpmt
1. xxxxx	1. xxx
2. xxx	2. xxxxx
3. xxxxx	3. xxxxx
4. xxxxx	4. xxxxx
	5. xxx

Executive Planning Council



vc search



reorganization



phase 2 diagram

Phase Two

STANDING COMMITTEES

Space Utilization

Staffing

Info Technology

Equipment

External Issues

Instructional Personnel

1. xxxx
2. xxx
3. xxxx
4. xxxxx

Student Services Personnel

1. xxx
2. xxx
3. xxxx
4. xxxxx

Academic Support Personnel

1. xxxx
2. xxx
3. xxxx
4. xxxxx

Inst. Support Personnel

1. xxxx
2. xxx
3. xxxx
4. xxxxx

Personnel Eqpmt

1. xxxx	xxxx
2. xxx	xxxxx
3. xxxx	xxxxx
4. xxxxx	xxxxx
	5. xxx

Personnel Eqpmt

1. xxxx	xxx
2. xxx	xxxxx
3. xxxx	xxxxx
4. xxxxx	xxxxx
	5. xxx

Personnel Eqpmt

1. xxxx	xxxx
2. xxx	xxxxx
3. xxxx	xxxxx
4. xxxxx	xxxxx
	5. xxx

Personnel Eqpmt

1. xxxx	xxx
2. xxx	xxxxx
3. xxxx	xxxxx
4. xxxxx	xxxxx
	5. xxx

Executive Planning Council



vc search



reorganization



phase 2 diagram

Phase Two

STANDING COMMITTEES

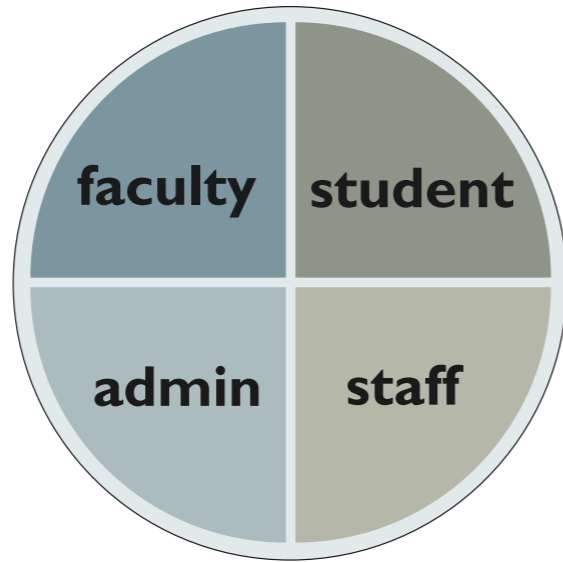
Space Utilization

Staffing

Info Technology

Equipment

External Issues



**Sponsor
Purpose
Guidelines
Resources
Membership
Meeting Schedule
How Work is Communicated
Outcomes/Deliverable
Recommendations go to:**

Standing Committees



2006–2007 Standing Committee Purpose Statement

Standing Committee: _____

Sponsor	
Committee Leader:	
Recorder:	
Start Date:	
End Date:	

Committee Purpose:	
In specific, the Committee serves the following purposes:	
Guidelines and Parameters:	
Resources:	

Membership		
Position	Name	Term



vc search

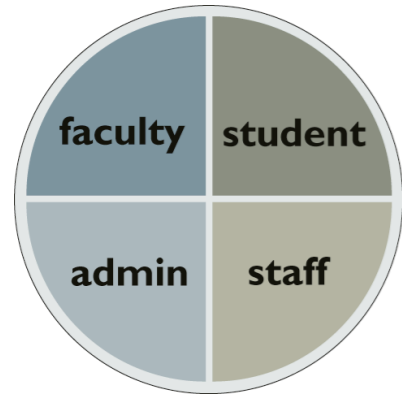


reorganization



phase 2 diagram

Phase Two



2006–2007 Standing Committee Purpose Statement

Standing Committee: _____

Sponsor	
Committee Leader:	
Recorder:	
Start Date:	
End Date:	

Committee Purpose:	
In specific, the Committee serves the following purposes:	
Guidelines and Parameters:	
Resources:	

Meeting Schedule

How Work is Communicated

Outcomes/
Deliverable

Recommendations
go to: _____



vc search



reorganization



phase 2 diagram

Phase Two

STANDING COMMITTEES

Space Utilization

Staffing

Info Technology

Equipment

External Issues

INSTRUCTIONAL DIVISIONS

Personnel	Eqpmt	Personnel	Eqpmt	Personnel	Eqpmt	Personnel	Eqpmt
1. xxxxx	1. xxx	1. xxxxx	1. xxx	1. xxxxx	1. xxx	1. xxxxx	1. xxx
2. xxx	2. xxxxx	2. xxx	2. xxxxx	2. xxx	2. xxxxx	2. xxx	2. xxxxx
3. xxxxx	3. xxxxx	3. xxxxx	3. xxxxx	3. xxxxx	3. xxxxx	3. xxxxx	3. xxxxx
4. xxxxx	4. xxxxx	4. xxxxx	4. xxxxx	4. xxxxx	4. xxxxx	4. xxxxx	4. xxxxx
	5. xxx		5. xxx		5. xxx		5. xxx

INSTRUCTIONAL PLAN



Personnel	Eqpmt
1. xxxxx	1. xxx
2. xxx	2. xxxxx
3. xxxxx	3. xxxxx
4. xxxxx	4. xxxxx
	5. xxx

STUDENT SERVICES AREAS

Personnel	Eqpmt	Personnel	Eqpmt	Personnel	Eqpmt	Personnel	Eqpmt
1. xxxxx	1. xxx	1. xxxxx	1. xxx	1. xxxxx	1. xxx	1. xxxxx	1. xxx
2. xxx	2. xxxxx	2. xxx	2. xxxxx	2. xxx	2. xxxxx	2. xxx	2. xxxxx
3. xxxxx	3. xxxxx	3. xxxxx	3. xxxxx	3. xxxxx	3. xxxxx	3. xxxxx	3. xxxxx
4. xxxxx	4. xxxxx	4. xxxxx	4. xxxxx	4. xxxxx	4. xxxxx	4. xxxxx	4. xxxxx
	5. xxx		5. xxx		5. xxx		5. xxx

STUDENT SRV PLAN



Personnel	Eqpmt
1. xxxxx	1. xxx
2. xxx	2. xxxxx
3. xxxxx	3. xxxxx
4. xxxxx	4. xxxxx
	5. xxx

ACADEMIC SUPPORT AREAS

Personnel	Eqpmt	Personnel	Eqpmt	Personnel	Eqpmt	Personnel	Eqpmt
1. xxxxx	1. xxx	1. xxxxx	1. xxx	1. xxxxx	1. xxx	1. xxxxx	1. xxx
2. xxx	2. xxxxx	2. xxx	2. xxxxx	2. xxx	2. xxxxx	2. xxx	2. xxxxx
3. xxxxx	3. xxxxx	3. xxxxx	3. xxxxx	3. xxxxx	3. xxxxx	3. xxxxx	3. xxxxx
4. xxxxx	4. xxxxx	4. xxxxx	4. xxxxx	4. xxxxx	4. xxxxx	4. xxxxx	4. xxxxx
	5. xxx		5. xxx		5. xxx		5. xxx

ACADEMIC SUPPORT PLAN



Personnel	Eqpmt
1. xxxxx	1. xxx
2. xxx	2. xxxxx
3. xxxxx	3. xxxxx
4. xxxxx	4. xxxxx
	5. xxx

INSTITUTIONAL SUPPORT AREAS

Personnel	Eqpmt	Personnel	Eqpmt	Personnel	Eqpmt	Personnel	Eqpmt
1. xxxxx	1. xxx	1. xxxxx	1. xxx	1. xxxxx	1. xxx	1. xxxxx	1. xxx
2. xxx	2. xxxxx	2. xxx	2. xxxxx	2. xxx	2. xxxxx	2. xxx	2. xxxxx
3. xxxxx	3. xxxxx	3. xxxxx	3. xxxxx	3. xxxxx	3. xxxxx	3. xxxxx	3. xxxxx
4. xxxxx	4. xxxxx	4. xxxxx	4. xxxxx	4. xxxxx	4. xxxxx	4. xxxxx	4. xxxxx
	5. xxx		5. xxx		5. xxx		5. xxx

INST. SUPPORT PLAN



Personnel	Eqpmt
1. xxxxx	1. xxx
2. xxx	2. xxxxx
3. xxxxx	3. xxxxx
4. xxxxx	4. xxxxx
	5. xxx

Executive Planning Council

